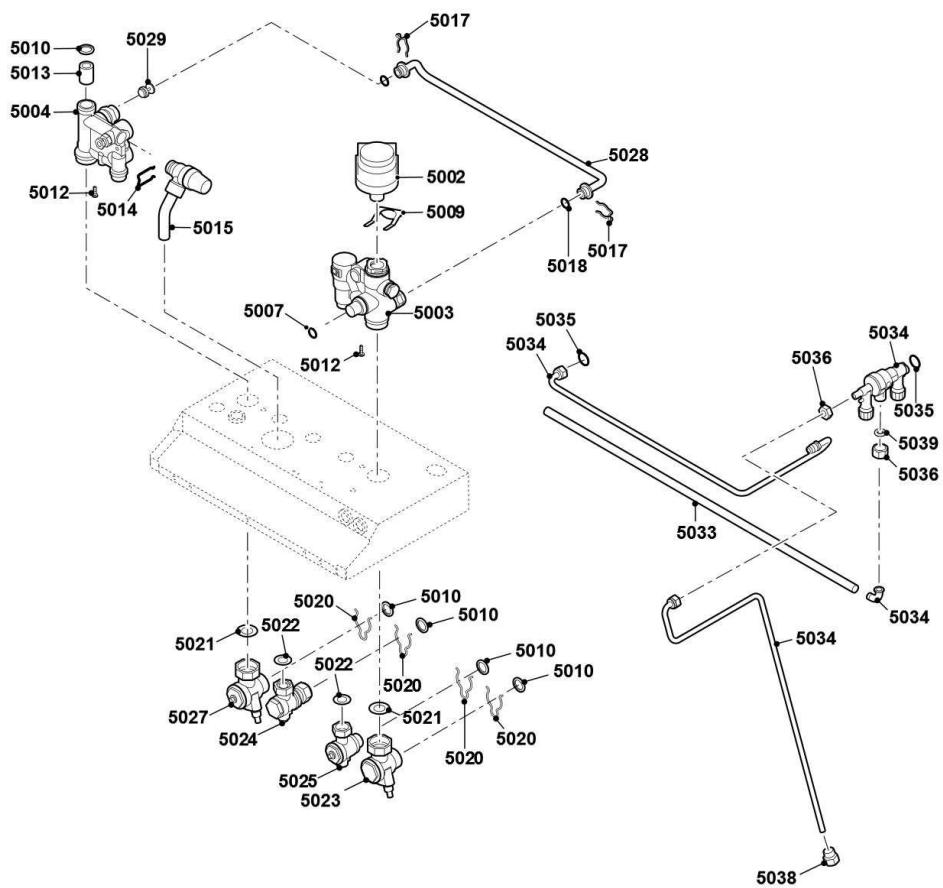


5



Réf.	Référence	Description	Qté	Remarques
0	S59141	VIS M5x18 (x15)	1	
0	S62720	PASSE FIL Ø 46x15 mm. (10 pcs.)	1	
0	S100222	BOUCHON ETANCHEITE (2X)	1	
5002	S59132	MOTEUR VANNE 3 VOIES	1	
5003	S100248	HYDROBLOC DROITE	1	
5004	S100247	HYDROBLOC GAUCHE	1	
5007	S58730	JOINT TORIQUE	1	
5009	S59135	RESSORT EPINGLE MOTEUR (X10)	1	
5010	S56155	JOINT Ø 23.8X17.2X2MM (X20)	1	
5012	S59578	VIS M5x8 (x20)	1	
5013	S100032	FILTRE DEPART	1	
5014	S62722	CLIP 16.5 (x10)	1	
5015	S62763	SOUPAPE DE SECURITE 3 BAR	1	
5017	S58757	RESSORT 17MM (10pcs)	1	
5018	S62433	JOINT TORIQUE D.16 X 3.6 (X10)	1	
5020	S62725	CLIP (25X)	1	
5021	S62730	JOINT PLAT 27.4 X 18.2 X 2	1	
5022	S56157	JOINT Ø 18,3 X 12,7 X 2 MM. (10 PCS)	1	
5023	S62765	ROBINET POUR TUBE D.22MM	1	
5024	S62764	ROBINET POUR TUBE D.15MM	1	
5025	S100234	VANNE D'ARRET 1/2" M10X1	1	
5027	S100233	VANNE DARRET 7/8" M10X1	1	
5028	S62754	TUBE BY-PASS	1	
5029	S62532	CLAPET	1	
5033	S100241	TUBE EVACUATION CONDENSATS 12/9 650MM	1	
5034	S100246	DISCONNECTEUR	1	
5035	S100232	JOINT 8.4X5X1.6 (10X)	1	
5036	S100231	ECROU M10X1X5 (5X)	1	
5039	S62715	JOINT D.14,5X8,5X2 (X10)	1	